

T2 - TST24

PHASE and TEMPERATURE Control Relays (Lifts)

- Protection relay against variations of the ambient temperature (min/max), overtemperature of the motor, phase sequence and phase imbalance or phase loss.
- DIN rail mounting.
- Visual indication of trip cause.

TEMPERATURE CONTROL

- Controls the temperature of the motor room (relay + external module OD-T2) or the temperature inside switchboards where no motor room is present. (relay + internal sensor IN-T2).
- Designed according to the EN 81-1 standard and complying with the European Union Directive for Lifts (95/16/CE).
- Two adjustable temperature thresholds.

PHASE AND TEMPERATURE (PTC) RELAY

- To Protect 3-phase devices.
- Suitable for Motors with built-in PTC sensors in applications such as elevators, cranes, hoists and similar installations.
- Sensitive to incorrect phase sequence.
- Monitoring of short circuit and ruptured wire in PTC circuit.

T2



PROTECTION FUNCTIONS T2

Temperature variation

CE

TST24



PROTECTION FUNCTIONS TST24

- Phase imbalance or phase loss
- Phase sequence
- Overtemperature
- Temperature variation
- Thermistor short-circuit

ODT
External module



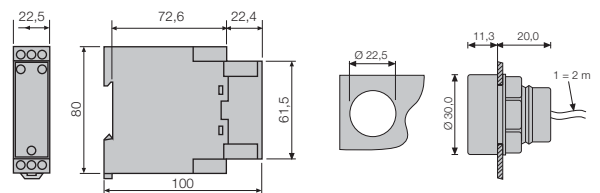
INT2
Internal sensor



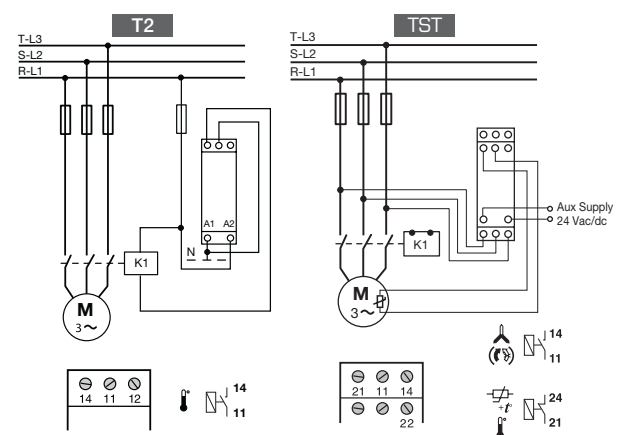
MODELS	T2		TST24	ODT2	INT2
Nominal voltage of the line to be monitored ($\pm 15\%$)	-		3 x 400 V	-	-
Voltage supply ($\pm 15\%$)	230 Vac (Aux)	24 Vac, dc (Aux)	24 Vac, dc (Aux)	-	-
Code	12051	12052	12090	12037	12036

CHARACTERISTICS	
Nominal frequency	50/60 Hz
Control range	Maximum temperature from 40°C to 55°C. Minimum temperature from -5°C to 5°C. Phase loss: with resistive loads relay trips when a phase loss occurs. With three-phase motors relay trips if the voltage regenerated by the motor is lower than 60% of the main voltage. Phase imbalance > 40%. Maximum temperature setting from 40 °C a 55 °C. Minimum temperature setting from -5 °C a 5 °C.
Hysteresis	2°C
PTC sensor: min/max cold resist - Trip resist	- / 100Ω / 1500Ω - 2300Ω
Trip time delay	< 0,1 s
Reset mode	Automatic
Signalling LED's	2 LED's: ON + / 3 LED's: ON + +
Output contacts	1 relay with 1 change over NO - NC / 1 relay NO-NC () - 1 relay NO-NC ()
Switching power	T2: I _n : 5A; AC15 - 250V - 2A; DC13 - 30V - 2A / TST24: I _n : 5A; AC15 - 250V - 2A; DC13 - 30V - 2A; DC13 - 115V - 0,2A
Maximum terminal section / screw torque	2,5 mm ² , No. 22 - 12AWG / 20Ncm, 1.8 LB - IN
Power consumption	7,5 VA (230 Vac) - 11 VA (400 Vac)
Protection degree / weight	IP20 / 0,12 kg / IP20 / 0,13 kg
Storage / operation temperature	-30°C +70°C / -15°C +60°C

DIMENSIONS (mm)



WIRING DIAGRAM



WORK LOGIC

